

the complete range of LF 3000® push-in fittings

threaded fittings

3175 taper Page A6	3101 parallel Page A7	3181 parallel Page A7	3114 parallel Page A7	3192 parallel Page A13	3109 taper Page A8	3129 taper Page A8	3113 taper Page A8
							
3199 parallel Page A9	3169 parallel Page A9	3133 parallel Page A9	3108 taper Page A10	3103 taper Page A10	3121 taper Page A10	3198 parallel Page A11	3193 parallel Page A11
							
3131 parallel Page A11	3148 taper Page A12	3112 taper Page A12	3158 parallel Page A13	3132 parallel Page A13	3118 parallel Page A15	3018 parallel Page A15	3124 parallel Page A14
							
3149 parallel Page A14	3119 parallel Page A14	3159 oscillating, taper Page A29	3189 oscillating, parallel Page A29				
							

tube to tube fittings

3140 Page A18	3144 Page A18	3106 Page A19	3106 Page A19	3102 Page A19	3102 Page A19	3104 Page A19	3104 Page A19
							


bulkhead connector fittings

3116 Page A20	3146 Page A20	3136 Page A20	3139 Page A20
			

multiple fittings and manifolds

3304 Page A21	3306 Page A21	3107 Page A21	3107 Page A21	3107 Page A21	3310 Page A21
					

plug-in fittings

3182 Page A22	3184 Page A22	3180 Page A22	3183 Page A22	3188 Page A22
				

plug-in accessories

3142 Page A23	3143 Page A23	3120 Page A23	3166 Page A24	3168 Page A24	3126 Page A24	3122 Page A24
						

the complete range of LF 3000® push-in fittings

multi-connectors and din rail connectors

3300
Page A25



3320
Page A26



3321
Page A26



3329
Page A26



3379
Page A27



3381
Page A27



modular banjo fittings

3538
Page A16



3539
Page A16



3549
Page A16



3527
parallel
Page A17



3528
parallel
Page A17



3529
parallel
Page A17



3524
parallel
Page A17



self-sealing fittings

3391
parallel
Page A28



3091
taper
Page A28



3160
plug-in
Page A28



accessories

0178
Page A30



0179
Page A30



0222
Page A30



clip
Page A30



3110
Page A31



3000 70
Page A31



cartridges

3100
Page A33



3 mm threaded fittings

3281
Page A35



3299
Page A35



3229
Page A35



3298
Page A35



3293
Page A35



3218
Page A35



3 mm tube to tube fittings

3206
Page A36



3202
Page A36



3204
Page A36



3266
Page A36



3226
Page A36



The LF 3000 system can be used for

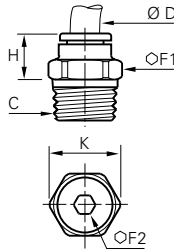
- **millimetric tubes**, from 3 mm to 14 mm
 - BSP taper, BSP parallel and metric threads
- **inch tubes**, from 1/8 to 1/2
 - NPT, UNF and BSP taper threads

stud fittings

3175 male stud fittings, hexagonal, with BSPT thread



nickel-plated brass,
pre-coated thread



Ø	D	C		F1	F2	H	K	Δkg
4	R1/8	3175 04 10		10	3	9,5	11	0,006
4	R1/4	3175 04 13		14	3	6,5	15	0,013
4	R3/8	3175 04 17		17	3	8	18,5	0,024
6	R1/8	3175 06 10		11	4	11,5	11	0,005
6	R1/4	3175 06 13		14	4	8,5	15	0,011
6	R3/8	3175 06 17		17	4	8,5	18,5	0,014
6	R1/2	3175 06 21		21	4	9	23	0,021
8	R1/8	3175 08 10		13	5	20	14	0,011
8	R1/4	3175 08 13		14	6	17	15	0,014
8	R3/8	3175 08 17		17	6	13	18,5	0,021
8	R1/2	3175 08 21		21	6	12	23	0,022
10	R1/8	3175 10 10		16	5	22,5	17,5	0,017
10	R1/4	3175 10 13		16	7	20	17,5	0,017
10	R3/8	3175 10 17		17	8	16,5	18,5	0,019
10	R1/2	3175 10 21		21	8	14	23	0,037
12	R1/4	3175 12 13		19	7	26,5	21	0,029
12	R3/8	3175 12 17		19	9	24	21	0,030
12	R1/2	3175 12 21		21	9	19,5	23	0,037
14	R3/8	3175 14 17		22	9	28,5	24	0,043
14	R1/2	3175 14 21		24	10	23,5	26	0,047

the "plus" of legris.com



Download **CAD drawings** of all **LF 3000®** models from the online catalogue of legris.com. Formats (2D and 3D) are compatible with principal worldwide CAD platforms. A **free service** accessible to everyone.

www.legris.com

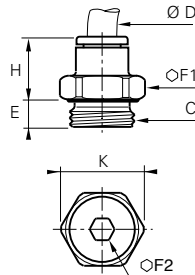


stud fittings

3101 male stud fittings, hexagonal, with BSPP, M3, M5 and M7 thread



nickel-plated brass, with integral 'O' ring seal

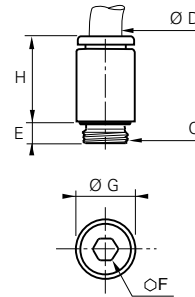


Ø D	C		E	F1	F2	H	K	Δ kg
3	M3x0,5	3101 03 09	2,5	8	-	12,5	8,5	0,003
3	M5x0,8	3101 03 19	3	8	2,5	12,5	8,5	0,003
4	M3x0,5	3101 04 09	2,5	8	-	14,5	8,5	0,003
4	M5x0,8	3101 04 19	3	8	2,5	14	8,5	0,003
4	M7x1	3101 04 55	5	10	2,5	14	11	0,005
4	G1/8	3101 04 10	4,5	13	3	11,5	14	0,007
4	G1/4	3101 04 13	5,5	16	3	10,5	17,5	0,011
6	M5x0,8	3101 06 19	3,5	10	2,5	16	11	0,005
6	M7x1	3101 06 55	5	10	3	16	11	0,005
6	M10x1	3101 06 60	5	13	4	13	14	0,030
6	M12x1,5	3101 06 67	5,5	15	4	13	16	0,009
6	G1/8	3101 06 10	4,5	13	4	13	14	0,007
6	G1/4	3101 06 13	5,5	16	4	12,5	17,5	0,011
6	G3/8	3101 06 17	5,5	20	4	13	22	0,015
6	G1/2	3101 06 21	7,5	24	4	20	26	0,018
8	M10x1	3101 08 60	5	13	5	21	14	0,012
8	M12x1,5	3101 08 67	5,5	15	5	21	16	0,030
8	G1/8	3101 08 10	4,5	13	5	20,5	14	0,011
8	G1/4	3101 08 13	5,5	16	6	19,5	17,5	0,016
8	G3/8	3101 08 17	5,5	20	6	18	22	0,022
8	G1/2	3101 08 21	7,5	24	6	16,5	26	0,018
10	G1/4	3101 10 13	5,5	16	7	23	17,5	0,018
10	G3/8	3101 10 17	5,5	20	8	19,5	22	0,021
10	G1/2	3101 10 21	7,5	24	8	18,5	26	0,033
12	G1/4	3101 12 13	5,5	19	7	27,5	21	0,027
12	G3/8	3101 12 17	5,5	20	9	27	22	0,029
12	G1/2	3101 12 21	7	24	10	22,5	26	0,035
14	G3/8	3101 14 17	5,5	22	9	29,5	24	0,041
14	G1/2	3101 14 21	7	24	11	28	26	0,047

3181 male stud fittings, round body, with BSPP and M7 thread



nickel-plated brass, with integral 'O' ring seal

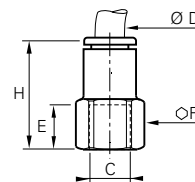


Ø D	C		E	F	G	H	Δ kg
4	M7x1	3181 04 55	5	3	10	14	0,005
6	M7x1	3181 06 55	5	3	10	16	0,006

3114 female stud fitting with BSPP and M5 thread

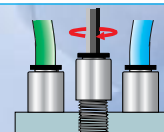


nickel-plated brass



Ø D	C		E	F	H	Δ kg
4	M5x0,8	3114 04 19	6,5	8	19,5	0,005
4	G1/8	3114 04 10	9,5	13	22,5	0,010
4	G1/4	3114 04 13	13,5	16	26,5	0,016
6	G1/8	3114 06 10	9,5	13	24,5	0,011
6	G1/4	3114 06 13	13,5	16	28,5	0,016
8	G1/8	3114 08 10	9,5	13	29	0,020
8	G1/4	3114 08 13	13,5	16	33	0,027
8	G3/8	3114 08 17	14	19	34	0,030
10	G1/4	3114 10 13	13,5	16	36	0,037
10	G3/8	3114 10 17	14	19	36	0,040
10	G1/2	3114 10 21	19,5	24	41,5	0,045
12	G3/8	3114 12 17	14	19	40	0,092
12	G1/2	3114 12 21	19,5	24	45,5	0,114
14	G3/8	3114 14 17	14	22	42,5	0,060

The internal hexagon and circular external shape ensure that models 3181 provide highly compact assembly. By using an Allen key, they can be installed in close proximity without the need to use a spanner.

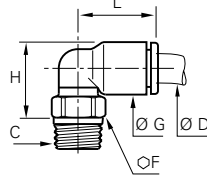


taper threaded fittings

3109 male stud elbow, BSPT thread



plastic body, nickel-plated brass stud, thread pre-coating



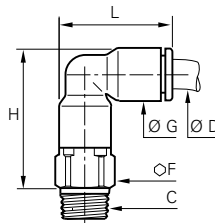
the body is orientable for positioning purposes

Ø D	C		F	G	H	L	△kg
4	R1/8	3109 04 10	10	8,5	13,5	14	0,006
4	R1/4	3109 04 13	14	8,5	14	14	0,014
4	R3/8	3109 04 17	17	8,5	13,5	14	0,019
6	R1/8	3109 06 10	10	10,5	15,5	16	0,006
6	R1/4	3109 06 13	14	10,5	16	16	0,015
6	R3/8	3109 06 17	17	10,5	16	16	0,016
6	R1/2	3109 06 21	21	10,5	16,5	16	0,018
8	R1/8	3109 08 10	10	13,5	19	23	0,013
8	R1/4	3109 08 13	14	13,5	18	23	0,015
8	R3/8	3109 08 17	17	13,5	18	23	0,018
8	R1/2	3109 08 21	21	13,5	19,5	23	0,030
10	R1/8	3109 10 10	15	16	23	26,5	0,014
10	R1/4	3109 10 13	15	16	22	26,5	0,016
10	R3/8	3109 10 17	17	16	22	26,5	0,019
10	R1/2	3109 10 21	21	16	22	26,5	0,031
12	R1/4	3109 12 13	15	19	25	31	0,071
12	R3/8	3109 12 17	17	19	25	31	0,074
12	R1/2	3109 12 21	21	19	25	31	0,092
14	R3/8	3109 14 17	20	22	30,5	35,5	0,091
14	R1/2	3109 14 21	24	22	28,5	35,5	0,095

3129 extended male stud elbow, BSPT thread

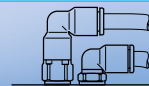


plastic body, nickel-plated brass stud, thread pre-coating



the body is orientable for positioning purposes

Ø D	C		F	G	H	L	△kg
4	R1/8	3129 04 10	10	8,5	23	19	0,021
4	R1/4	3129 04 13	14	8,5	23,5	19	0,038
6	R1/8	3129 06 10	10	10,5	27	22,5	0,037
6	R1/4	3129 06 13	14	10,5	27,5	22,5	0,044
8	R1/8	3129 08 10	13	13,5	34,5	29,5	0,025
8	R1/4	3129 08 13	14	13,5	32,5	29,5	0,026
8	R3/8	3129 08 17	17	13,5	33	29,5	0,035
10	R1/4	3129 10 13	15	16	39,5	34,5	0,031
10	R3/8	3129 10 17	17	16	39,5	34,5	0,041
10	R1/2	3129 10 21	21	16	39,5	34,5	0,042
12	R1/4	3129 12 13	19	19	45,5	40,5	0,035
12	R3/8	3129 12 17	19	19	45,5	40,5	0,045
12	R1/2	3129 12 21	21	19	45,5	40,5	0,060
14	R3/8	3129 14 17	21	22	51,5	46,5	0,080
14	R1/2	3129 14 21	21	22	51,5	46,5	0,095

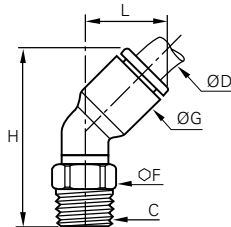


3129 is designed to allow very close assembly with 3109 male stud elbow.

3113 45° male elbow, BSPT thread



plastic body, nickel-plated brass stud, thread pre-coating



the body is orientable for positioning purposes

Ø D	C		F	G	H	L	△kg
4	R1/8	3113 04 10	10	9	24,5	13	0,008
6	R1/8	3113 06 10	10	11	28	14,5	0,008
6	R1/4	3113 06 13	14	11	30	14,5	0,017
8	R1/8	3113 08 10	10	13,5	33,5	19,5	0,016
8	R1/4	3113 08 13	14	13,5	33,5	19,5	0,018
8	R3/8	3113 08 17	17	13,5	33,5	19,5	0,021
10	R1/4	3113 10 13	15	16	38,5	23	0,020
10	R3/8	3113 10 17	17	16	39	23	0,023
10	R1/2	3113 10 21	21	16	40,5	23	0,034
12	R1/4	3113 12 13	15	19	44	26	0,071
12	R3/8	3113 12 17	17	19	44	26	0,074
12	R1/2	3113 12 21	21	19	46	26	0,092



Prevents excessive angular loads on tubing which can cause kinking and distortion of the tube.

Legris offers a solution for all tubing configurations.

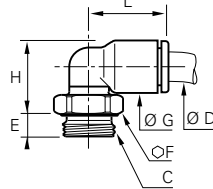


threaded fittings

3199 male stud elbow, BSPP, M3, M5 and M7 thread



plastic body with integral "O" ring seal, nickel-plated brass stud



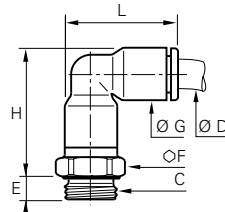
the body is orientable for positioning purposes

Ø D	C		E	F	G	H	L	Δkg
3	M3x0,5	3199 03 09	2,5	8	8,5	15	14,5	0,003
3	M5x0,8	3199 03 19	3,5	8	8,5	13,5	14,5	0,003
4	M3x0,5	3199 04 09	2,5	8	8,5	15	14,5	0,003
4	M5x0,8	3199 04 19	3,5	8	8,5	13,5	14	0,003
4	M7x1	3199 04 55	4,5	10	8,5	15	14	0,005
4	G1/8	3199 04 10	5	13	8,5	13	14	0,007
4	G1/4	3199 04 13	5,5	16	8,5	13	14	0,012
6	M5x0,8	3199 06 19	3,5	8	10,5	15,5	16	0,015
6	M7x1	3199 06 55	4,5	10	10,5	17,5	16	0,013
6	M10x1	3199 06 60	5	13	10,5	15	14	0,007
6	M12x1,5	3199 06 67	5,5	15	10,5	15	16	0,030
6	G1/8	3199 06 10	5	13	10,5	15	16	0,008
6	G1/4	3199 06 13	5,5	16	10,5	15	16	0,013
6	G3/8	3199 06 17	5,5	20	10,5	15,5	16	0,014
6	G1/2	3199 06 21	7	24	10,5	16	16	0,015
8	M10x1	3199 08 60	5	13	13,5	20,5	23	0,025
8	M12x1,5	3199 08 67	5,5	15	13,5	19,5	23	0,010
8	G1/8	3199 08 10	4,5	13	13,5	20,5	23	0,014
8	G1/4	3199 08 13	5,5	16	13,5	18,5	23	0,017
8	G3/8	3199 08 17	5,5	20	13,5	18,5	23	0,023
8	G1/2	3199 08 21	7	24	13,5	19	23	0,025
10	G1/4	3199 10 13	5,5	16	16	23,5	26,5	0,029
10	G3/8	3199 10 17	5,5	20	16	22	26,5	0,033
10	G1/2	3199 10 21	7,5	24	16	22	26,5	0,036
12	G1/4	3199 12 13	5,5	16	19	26,5	31	0,069
12	G3/8	3199 12 17	5,5	20	19	25	31	0,069
12	G1/2	3199 12 21	7	24	19	25	31	0,090
14	G3/8	3199 14 17	5,5	20	22	32,5	35,5	0,087
14	G1/2	3199 14 21	7	24	22	27	35,5	0,097

3169 extended male stud elbow, BSPP, M5 and M7 thread



plastic body with integral "O" ring seal, nickel-plated brass stud



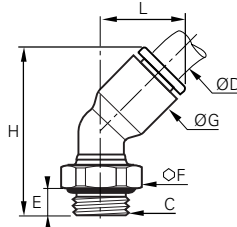
the body is orientable for positioning purposes

Ø D	C		E	F	G	H	L	Δkg
4	M5x0,8	3169 04 19	3,5	8	8,5	23	19	0,007
4	M7x1	3169 04 55	4,5	10	8,5	22,5	19	0,009
4	G1/8	3169 04 10	5	13	8,5	22,5	19	0,009
4	G1/4	3169 04 13	5,5	16	8,5	22,5	19	0,014
6	M5x0,8	3169 06 19	3,5	10	10,5	27,5	23	0,009
6	M7x1	3169 06 55	4,5	10	10,5	26	23	0,009
6	G1/8	3169 06 10	5	13	10,5	27	23	0,012
6	G1/4	3169 06 13	5,5	16	10,5	27	23	0,017
8	G1/8	3169 08 10	5	13	13,5	36	29,5	0,025
8	G1/4	3169 08 13	5,5	16	13,5	33	29,5	0,026
8	G3/8	3169 08 17	5,5	20	13,5	33	29,5	0,035
10	G1/4	3169 10 13	5,5	16	16	40,5	34,5	0,038
10	G3/8	3169 10 17	5,5	20	16	40,5	34,5	0,040
10	G1/2	3169 10 21	7,5	24	16	40,5	34,5	0,042
12	G1/4	3169 12 13	5,5	19	19	44,5	40,5	0,060
12	G3/8	3169 12 17	5,5	20	19	42	40,5	0,065
12	G1/2	3169 12 21	7,5	24	19	42	40,5	0,080
14	G3/8	3169 14 17	5,5	22	22	51	46,5	0,100
14	G1/2	3169 14 21	7,5	24	22	48,5	46,5	0,100

3133 45° male elbow, BSPP and M5 thread



plastic body with integral "O" ring seal, nickel-plated brass stud



the body is orientable for positioning purposes

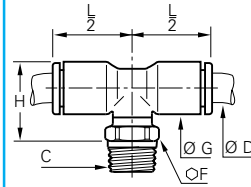
Ø D	C		E	F	G	H	L	Δkg
4	M5x0,8	3133 04 19	3,5	8	9	23	13	0,005
4	G1/8	3133 04 10	4,5	13	9	25	13	0,008
6	M5x0,8	3133 06 19	3,5	8	11	30	14,5	0,005
6	G1/8	3133 06 10	4,5	13	11	28,5	14,5	0,008
6	G1/4	3133 06 13	5,5	16	11	29,5	14,5	0,017
8	G1/8	3133 08 10	4,5	13	13,5	36	19,5	0,016
8	G1/4	3133 08 13	5,5	16	13,5	34,5	19,5	0,018
8	G3/8	3133 08 17	5,5	20	13,5	34,5	19,5	0,021
10	G1/4	3133 10 13	5,5	16	16	40,5	23	0,020
10	G3/8	3133 10 17	5,5	20	16	39	23	0,023
10	G1/2	3133 10 21	7	24	16	41	23	0,034
12	G1/4	3133 12 13	5,5	16	19	46	26	0,071
12	G3/8	3133 12 17	5,5	20	19	44,5	26	0,074
12	G1/2	3133 12 21	7	24	19	46	26	0,092

threaded fittings

3108 male stud branch tee, BSPT thread



plastic body, nickel-plated brass stud with pre-coated thread



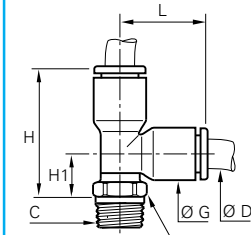
the body is orientable for positioning purposes

Ø D	C		F	G	H	$\frac{L}{2}$	Δ kg
4	R1/8	3108 04 10	10	8,5	15,5	14	0,007
4	R1/4	3108 04 13	14	8,5	16	14	0,015
6	R1/8	3108 06 10	10	10,5	17,5	16	0,009
6	R1/4	3108 06 13	14	10,5	18	16	0,017
8	R1/8	3108 08 10	10	13,5	22	23	0,016
8	R1/4	3108 08 13	14	13,5	21	23	0,019
8	R3/8	3108 08 17	17	13,5	21	23	0,020
10	R1/4	3108 10 13	15	16	24	26,5	0,021
10	R3/8	3108 10 17	17	16	24	26,5	0,024
10	R1/2	3108 10 21	21	16	24	26,5	0,028
12	R1/4	3108 12 13	15	19	27	31	0,094
12	R3/8	3108 12 17	17	19	27	31	0,092
12	R1/2	3108 12 21	21	19	27	31	0,109
14	R3/8	3108 14 17	20	22	30,5	35,5	0,113
14	R1/2	3108 14 21	24	22	28,5	35,5	0,114

3103 male stud run tee, BSPT thread



plastic body, nickel-plated brass stud with pre-coated thread



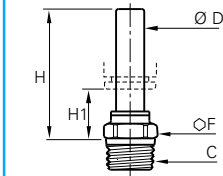
the body is orientable for positioning purposes

Ø D	C		F	G	H	H1	L	Δ kg
4	R1/8	3103 04 10	10	8,5	23,5	9	14,5	0,007
4	R1/4	3103 04 13	14	8,5	24	9,5	14,5	0,010
6	R1/8	3103 06 10	10	10,5	27,5	10	17,5	0,009
6	R1/4	3103 06 13	14	10,5	28	10,5	17,5	0,017
8	R1/8	3103 08 10	10	13,5	35	12	23	0,016
8	R1/4	3103 08 13	14	13,5	34	11	23	0,019
8	R3/8	3103 08 17	17	13,5	34	11	23	0,020
10	R1/4	3103 10 13	15	16	40,5	14	26,5	0,021
10	R3/8	3103 10 17	17	16	40,5	14	26,5	0,024
10	R1/2	3103 10 21	21	16	40,5	14	26,5	0,028
12	R1/4	3103 12 13	15	19	46,5	15,5	31	0,094
12	R3/8	3103 12 17	17	19	46,5	15,5	31	0,092
12	R1/2	3103 12 21	21	19	46,5	15,5	31	0,109
14	R3/8	3103 14 17	20	22	55	19,5	35,5	0,113
14	R1/2	3103 14 21	24	22	52,5	17,5	35,5	0,114

3121 male BSPT threaded standpipe

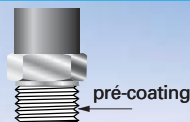


nylon probe, nickel-plated brass stud end with pre-coated thread



Ø D	C		F	H	H1	Δ kg
4	R1/8	3121 04 10	10	26	14	0,005
4	R1/4	3121 04 13	14	26,5	14,5	0,013
6	R1/8	3121 06 10	10	28	14	0,005
6	R1/4	3121 06 13	14	28,5	14,5	0,013
8	R1/8	3121 08 10	10	29,5	11	0,006
8	R1/4	3121 08 13	14	28,5	10	0,008
8	R3/8	3121 08 17	17	28,5	10	0,012
10	R1/4	3121 10 13	15	36	15,5	0,010
10	R3/8	3121 10 17	17	36	15,5	0,012
10	R1/2	3121 10 21	21	36	15,5	0,022
12	R3/8	3121 12 17	17	36,5	12	0,022
12	R1/2	3121 12 21	21	36,5	12	0,043
14	R1/2	3121 14 21	21	41	13,5	0,043

Pre-coating of part numbers 3108 - 3103 and 3121



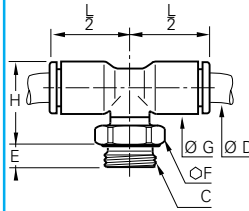
All taper threaded LF 3000® male fittings are supplied with a pre-coated thread for immediate installation and re-use.

threaded fittings

3198 male stud branch tee BSP and M5 thread



plastic body complete with integral 'O' ring seal, nickel-plated brass stud



the body is orientable for positioning purposes

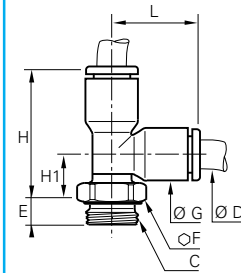
Ø D	C		E	F	G	H	L/2	Δkg
4	M5x0,8	3198 04 19	3,5	8	8,5	17,5	14	0,004
4	G1/8	3198 04 10	5	13	8,5	15	14	0,008
4	G1/4	3198 04 13	5,5	16	8,5	15	14	0,013
6	M5x0,8	3198 06 19	3,5	8	10,5	19,5	16	0,006
6	G1/8	3198 06 10	5	13	10,5	17	16	0,010
6	G1/4	3198 06 13	5,5	16	10,5	17	16	0,015
8	G1/8	3198 08 10	4,5	13	13,5	23,5	23	0,017
8	G1/4	3198 08 13	5,5	16	13,5	21,5	23	0,020
8	G3/8	3198 08 17	5,5	20	13,5	21,5	23	0,023
10	G1/4	3198 10 13	5,5	16	16	26	26,5	0,021
10	G3/8	3198 10 17	5,5	20	16	24	26,5	0,024
10	G1/2	3198 10 21	7,5	24	16	24	26,5	0,039
12	G1/4	3198 12 13	5,5	16	19	29	31	0,088
12	G3/8	3198 12 17	5,5	20	19	27	31	0,081
12	G1/2	3198 12 21	7	24	19	27	31	0,092
14	G3/8	3198 14 17	5,5	20	22	32,5	35,5	0,110
14	G1/2	3198 14 21	7	24	22	27	35,5	0,120

Due to the low profile body, we recommend the use of an extra-flat spanner.

3193 male stud run tee BSP and M5 thread



plastic body complete with integral 'O' ring seal, nickel-plated brass stud



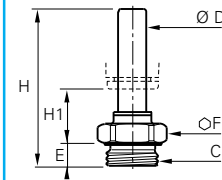
the body is orientable for positioning purposes

Ø D	C		E	F	G	H	H1	L	Δkg
4	M5x0,8	3193 04 19	3,5	8	8,5	26	11,5	14,5	0,004
4	G1/8	3193 04 10	5	13	8,5	23	8,5	14,5	0,008
4	G1/4	3193 04 13	5,5	16	8,5	23	8,5	14,5	0,013
6	M5x0,8	3193 06 19	3,5	8	10,5	29,5	12,5	17,5	0,007
6	G1/8	3193 06 10	5	13	10,5	27	10	17,5	0,010
6	G1/4	3193 06 13	5,5	16	10,5	27	10	17,5	0,015
8	G1/8	3193 08 10	4,5	13	13,5	36,5	14	23	0,017
8	G1/4	3193 08 13	5,5	16	13,5	34,5	12	23	0,020
8	G3/8	3193 08 17	5,5	20	13,5	34,5	12	23	0,023
10	G1/4	3193 10 13	5,5	16	16	42	15,5	26,5	0,021
10	G3/8	3193 10 17	5,5	20	16	40,5	14	26,5	0,023
10	G1/2	3193 10 21	7,5	24	16	40,5	14	26,5	0,039
12	G1/4	3193 12 13	5,5	16	19	48	17	31	0,087
12	G3/8	3193 12 17	5,5	20	19	46,5	15,5	31	0,088
12	G1/2	3193 12 21	7	24	19	46,5	15,5	31	0,091
14	G3/8	3193 14 17	5,5	20	22	56,5	21,5	35,5	0,110
14	G1/2	3193 14 21	7	24	22	51	16	35,5	0,120

3131 male parallel and M5 threaded standpipe



nylon stem, nickel-plated brass stud with 'O' ring seal



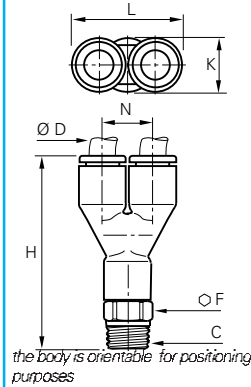
Ø D	C		E	F	H	H1	Δkg
4	M5x0,8	3131 04 19	3,5	8	31	16	0,002
4	G1/8	3131 04 10	5	13	30	13,5	0,006
4	G1/4	3131 04 13	5,5	16	31	13,5	0,011
6	G1/8	3131 06 10	5	13	32	13,5	0,006
6	G1/4	3131 06 13	5,5	16	33	13,5	0,011
8	G1/8	3131 08 10	5	13	35,5	12,5	0,006
8	G1/4	3131 08 13	5,5	16	34,5	10,5	0,012
8	G3/8	3131 08 17	5,5	20	34,5	10,5	0,015
10	G1/4	3131 10 13	5,5	16	43,5	17,5	0,012
10	G3/8	3131 10 17	5,5	20	41,5	15,5	0,015
10	G1/2	3131 10 21	7,5	24	41,5	15,5	0,026
12	G3/8	3131 12 17	5,5	20	42	12	0,052
12	G1/2	3131 12 21	7	24	43,5	12	0,056
14	G3/8	3131 14 17	5,5	20	46,5	14	0,039
14	G1/2	3131 14 21	7	24	48	13,5	0,049

threaded fittings

3148 "Y" piece with male BSPT thread



plastic body
nickel-plated brass stud
with pre-coating

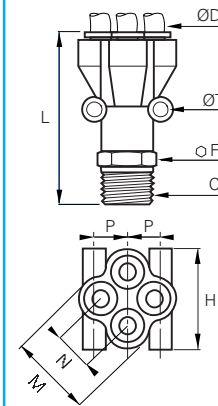


Ø D	C		F	H	K	L	N	△kg
4	R1/8	3148 04 10	10	32,5	8,5	17,5	9	0,010
4	R1/4	3148 04 13	14	33	8,5	17,5	9	0,018
6	R1/8	3148 06 10	10	39,5	10,5	21,5	11	0,012
6	R1/4	3148 06 13	14	40	10,5	21,5	11	0,019
8	R1/8	3148 08 10	13	56,5	13,5	28	14,5	0,033
8	R1/4	3148 08 13	14	55,5	13,5	28	14,5	0,037
8	R3/8	3148 08 17	16	48,5	13,5	28	14,5	0,040
10	R1/4	3148 10 13	14	60	19	39	20	0,040
10	R3/8	3148 10 17	16	60,5	19	39	20	0,043
10	R1/2	3148 10 21	24	61	19	39	20	0,045
12	R3/8	3148 12 17	19	66	19	39	20	0,045
12	R1/2	3148 12 21	21	66	19	39	20	0,047

3112 double "Y" piece with male BSPT thread



plastic body
nickel-plated brass stud
with pre-coating



Ø D	C		F	H	L	M	N	P	T	△kg
4	R1/8	3112 04 10	13	25,5	41,5	21	10	8,5	3,7	0,033
4	R1/4	3112 04 13	14	25,5	43,5	21	10	8,5	3,7	0,046
6	R1/8	3112 06 10	19	31,5	54,5	26,5	12	10	3,7	0,053
6	R1/4	3112 06 13	19	31,5	57,5	26,5	12	10	3,7	0,066

Identification

Part numbers have been chosen by a method of mnemonics. Each LF 3000® fitting is identified by :

- its series
- the diameter of passage through the fitting
- by the thread code or second tube diameter

Example

3148 04 10

type of fitting

O.D. of tube

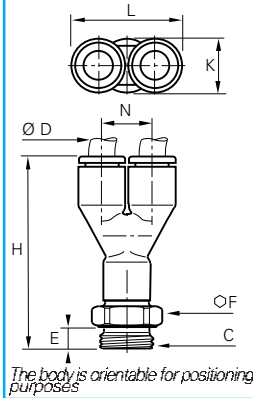
thread code or second tube O.D.

threaded fittings

3158 "Y" piece with male BSPP and M5 thread



plastic body, nickel-plated brass stud, with integral 'O' ring seal

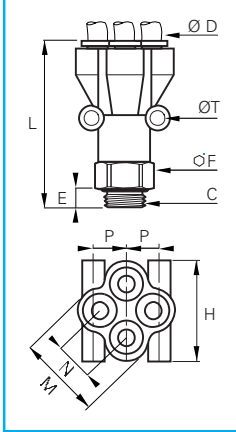


Ø D	C		E	F	H	K	L	N	Δkg
4	M5x0,8	3158 04 19	3,5	8	32,5	8,5	17,5	9	0,010
4	G1/8	3158 04 10	5	13	32	8,5	17,5	9	0,010
4	G1/4	3158 04 13	5,5	16	32	8,5	17,5	9	0,015
6	M5x0,8	3158 06 19	3,5	10	39,5	10,5	21,5	11	0,011
6	G1/8	3158 06 10	5	13	39	10,5	21,5	11	0,014
6	G1/4	3158 06 13	5,5	16	39	10,5	21,5	11	0,019
8	G1/8	3158 08 10	5	13	56	13,5	28	14,5	0,033
8	G1/4	3158 08 13	5,5	16	55	13,5	28	14,5	0,039
8	G3/8	3158 08 17	6	19	54	13,5	28	14,5	0,040
10	G1/4	3158 10 13	5,5	16	63,5	16	33	17	0,040
10	G3/8	3158 10 17	6	20	63,5	16	33	17	0,043
10	G1/2	3158 10 21	7	24	65	16	33	17	0,045
12	G3/8	3158 12 17	6	20	68	19	39	20	0,045
12	G1/2	3158 12 21	7	24	70	19	39	20	0,047

3132 double "Y" with male BSPP thread



plastic body, nickel-plated brass stud, with integral 'O' ring seal

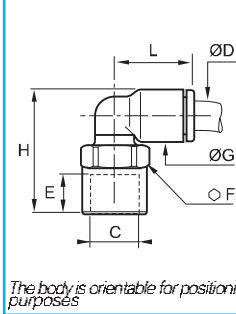


Ø D	C		E	F	H	L	M	N	P	T	Δkg
4	G1/8	3132 04 10	5	13	25,5	41	21	10	8,5	3,7	0,039
4	G1/4	3132 04 13	5,5	16	25,5	40	21	10	8,5	3,7	0,046
6	G1/8	3132 06 10	5	19	31,5	52,5	26,5	12	10	3,7	0,066
6	G1/4	3132 06 13	5,5	19	31,5	53,5	26,5	12	10	3,7	0,053

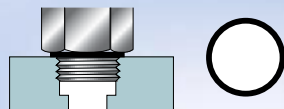
3192 female stud elbow, BSPP thread



plastic body, nickel-plated brass female stud



Ø D	C		E	F	G	H	L	Δkg
4	G1/8	3192 04 10	8,5	13	8,5	23	14	0,009
4	G1/4	3192 04 13	11,5	16	8,5	27	14	0,012
6	G1/8	3192 06 10	8,5	13	10,5	25	16	0,011
6	G1/4	3192 06 13	11,5	16	10,5	29	16	0,011
8	G1/8	3192 08 10	8,5	13	13,5	28	23	0,014
8	G1/4	3192 08 13	11,5	16	13,5	32	23	0,017
8	G3/8	3192 08 17	12	19	13,5	33	23	0,022
10	G1/4	3192 10 13	11	16	16	34,5	26,5	0,029
10	G3/8	3192 10 17	12	19	16	35	26,5	0,034
10	G1/2	3192 10 21	16	24	16	41	26,5	0,037
12	G1/4	3192 12 13	11	16	19	38	30,5	0,040
12	G3/8	3192 12 17	12	19	19	38,5	30,5	0,041
12	G1/2	3192 12 21	16	24	19	43,5	30,5	0,045



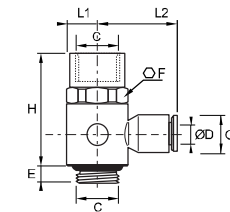
All LF 3000® fittings with **BSPP and M5 threads** are supplied complete with an **integral 'O' ring seal**. This permits instant assembly of the fitting, without preparation of the thread, and provides a fixed assembled height to the fitting.

full flow banjos

3124 single banjo with female BSPP bolt, M5 and BSPP thread



plastic body with integral 'O' ring seal, nickel-plated brass bolt



Ø D	C		E	F	G	H	L1	L2	
4	M5x0,8	3124 04 19	4	8	8,5	19	5	16	0,006
4	G1/8	3124 04 10	4	13	8,5	25,5	7	18,5	0,012
6	G1/4	3124 06 13	5,5	17	10,5	33	9	22	0,031
8	G3/8	3124 08 17	5,5	20	13,5	37,5	11	29	0,056

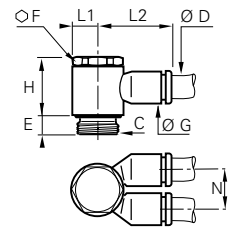
This is a useful component allowing :

- the mounting of function fittings (sensors, flow controllers and pressure reducers).
- the tapping off of a pneumatic supply from a pneumatic cylinder port .

3149 twin banjo, BSPP thread and metric



plastic body with integral 'O' ring seal, nickel-plated brass bolt



*with screwdriver slot

Ø D	C		E	F	G	H	L1	L2	N	
4	M5x0,8	3149 04 19*	4	-	8,5	13	4,5	16	9	0,008
4	G1/8	3149 04 10	4	13	10,5	16,5	7	18,5	11,5	0,013
6	G1/8	3149 06 10	4	13	10,5	16,5	7	18,5	11,5	0,013
6	G1/4	3149 06 13	5,5	17	13,5	21	9,5	27	14,5	0,034
8	G1/4	3149 08 13	5,5	17	13,5	21	9,5	27	14,5	0,034
8	G3/8	3149 08 17	5,5	20	16	24,5	11	31	17	0,066
10	G3/8	3149 10 17	5,5	20	16	24,5	11	31	17	0,066

This fitting provides 2 parallel outlets on the same side.

3119 double banjo, BSPP and M5 thread



plastic body with integral 'O' ring seal, nickel-plated brass bolt

Ø D	C		E	F	G	H	$\frac{L}{2}$	
4	M5x0,8	3119 04 19*	4	-	8,5	13	16	0,005
4	G1/8	3119 04 10	4	13	11	17	20	0,021
6	G1/8	3119 06 10	4	13	11	17	20	0,024
6	G1/4	3119 06 13	5,5	17	13,5	21	26,5	0,031
8	G1/4	3119 08 13	5,5	17	13,5	21	27	0,033
8	G3/8	3119 08 17	5,5	20	16	24,5	30,5	0,052
10	G3/8	3119 10 17	5,5	20	16	24,5	31	0,045

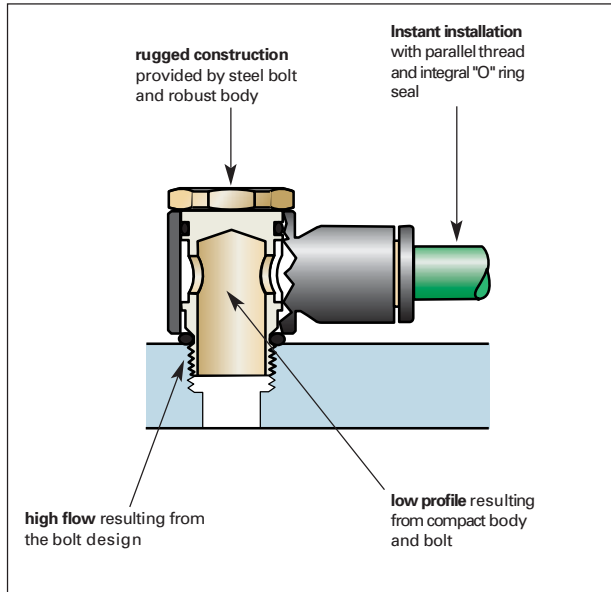
*with screwdriver slot

Legris **packaging boxes** ensure perfect **protection** of products. They are designed to answer the user's requirements, with :

- **immediate** visual **identification** - each model has clear marking which indicates the part number and the corresponding technical drawing.
- **easy** storage
- a **bar code**
- an **impregnable** system of **opening/closing**
- **recyclable** material



full flow banjos



Specification includes :

- **parallel and metric threads** with an integral "O" ring seal offer the same advantages as those found on male stud fittings ; instant assembly, security and consistent assembled height.
- **compactness and low profile** for better space utilisation and accessibility.
- **full flow**, equivalent to that of male stud elbows, and robust construction utilising a steel bolt.

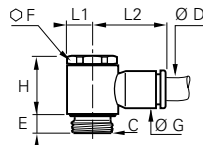
Maximum tightening torque for 3118 range

Thread	M3x0,5	M5x0,8	G1/8"	G1/4"	G3/8"	G1/2
m.da N	0,05	0,1	0,4	0,5	0,6	0,7

3118 single banjo, BSPP and M5 thread



plastic body, nickel-plated brass bolt complete with integral sealing 'O' ring



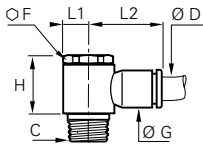
* with screwdriver slot

Ø D	C		E	F	G	H	L1	L2	△kg
3	M3x0,5	3118 03 09*	3	-	8,5	13	5	16	0,007
3	M5x0,8	3118 03 19*	4	-	8,5	13	5	16	0,007
4	M5x0,8	3118 04 19*	4	-	8,5	13	5	16	0,007
4	G1/8	3118 04 10	4	13	8,5	17	7	18,5	0,010
6	M5x0,8	3118 06 19*	4	-	10,5	13	7	18,5	0,008
6	G1/8	3118 06 10	4	13	10,5	17	7	20	0,011
6	G1/4	3118 06 13	5,5	17	10,5	21	9	22	0,015
8	G1/8	3118 08 10	4	13	13,5	16,5	7	25	0,022
8	G1/4	3118 08 13	5,5	17	13,5	21	9	27	0,030
8	G3/8	3118 08 17	5,5	20	13,5	24,5	11	29	0,049
10	G1/4	3118 10 13	5,5	17	16	21	9	29	0,058
10	G3/8	3118 10 17	5,5	20	16	24,5	11	31	0,061
10	G1/2	3118 10 21	8	25	19	27,5	13,5	36,5	0,085
12	G3/8	3118 12 17	5,5	20	19	24,5	11,5	34,5	0,067
12	G1/2	3118 12 21	8	25	19	27,5	13,5	36,5	0,072

3018 single banjo, BSPT thread

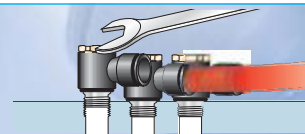


plastic body, nickel-plated brass bolt with pre-coated thread



Ø D	C		F	G	H	L1	L2	△kg
4	R1/8	3018 04 10	13	8,5	18,5	7	18,5	0,010
6	R1/8	3018 06 10	13	10,5	18,5	7	20	0,011
6	R1/4	3018 06 13	17	10,5	22,5	9,5	22	0,015
8	R1/8	3018 08 10	13	13,5	18,5	7	25	0,022
8	R1/4	3018 08 13	17	13,5	22,5	9,5	27	0,030
8	R3/8	3018 08 17	21	13,5	26,5	11	29	0,049
10	R1/4	3018 10 13	17	16	22,5	9,5	29	0,058
10	R3/8	3018 10 17	21	16	26,5	11	31	0,061
12	R1/4	3018 12 13	21	19	26,5	11	34,5	0,065
12	R3/8	3018 12 17	21	19	26,5	11	34,5	0,067
12	R1/2	3018 12 21	25	19	30	13,5	37	0,090

Legris banjos allow easy access, even when connections are close together.



banjo bodies for modular construction

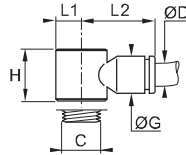


By stacking 2 and 3 compact bodies on top of each other using one bolt, a wide range of permutations of fittings, modules and manifolds can be constructed. Between 2 to 6 outlets in one modular construction are possible; the tube diameters may be different or the same. Wide flexibility in the creation of fittings to meet the personalised requirements of the end user.

3538 single banjo bodies



plastic body



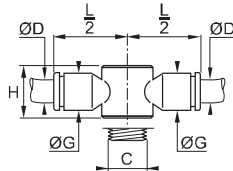
* brass body

ØD	C		G	H	L1	L2	kg
3	M5x0,8	3538 03 19	8,5	13	5	16	0,004
4	M5x0,8	3538 04 19	8,5	13	5	16	0,004
4	G1/8	3538 04 10	10,5	14,5	7	18,5	0,006
6	M5x0,8	3538 06 19	11	13	5	18,5	0,004
6	G1/8	3538 06 10	10,5	14,5	7	20	0,007
6	G1/4	3538 06 13	13,5	18	9,5	22	0,009
8	G1/8	3538 08 10	13,5	14,5	7	25	0,015
8	G1/4	3538 08 13	13,5	18	9,5	27	0,020
8	G3/8	3538 08 17	13,5	21,5	11,5	29	0,020
10	G1/4	3538 10 13	16	18	9,5	29	0,035
10	G3/8	3538 10 17	16	21,5	11,5	31	0,035
10	G1/2	3538 10 21	19	22,5	13,5	36,5	0,035
12	G3/8	3538 12 17	19	21,5	11,5	34,5	0,040
12	G1/2	3538 12 21	19	22,5	13,5	36,5	0,040

3539 double banjo bodies



plastic body

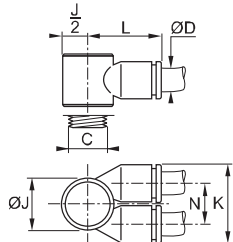


ØD	C		G	H	L/2	kg
4	M5x0,8	3539 04 19	8,5	13	16	0,007
4	G1/8	3539 04 10	10,5	14,35	20	0,008
6	G1/8	3539 06 10	10,5	14,35	20	0,011
6	G1/4	3539 06 13	13,5	18	26	0,012
8	G1/4	3539 08 13	13,5	18	27	0,017
8	G3/8	3539 08 17	16	21,5	30,5	0,025
10	G3/8	3539 10 17	16	21,5	31	0,025

3549 twin banjo bodies



plastic body

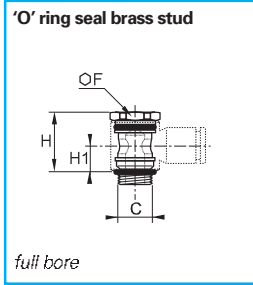


ØD	C		J	K	L	N	kg
4	M5x0,8	3549 04 19	10	17,5	15,5	9	0,007
4	G1/8	3549 04 10	14	22,5	20	12	0,008
4	G1/4	3549 04 13	18,5	28	25	14,5	0,011
6	G1/8	3549 06 10	14	22,5	20,5	12	0,011
6	G1/4	3549 06 13	18,5	28	25	14,5	0,012
6	G3/8	3549 06 17	22,5	33	28,5	17	0,022
8	G1/4	3549 08 13	18,5	28	26	14,5	0,017
8	G3/8	3549 08 17	22,5	33	29,5	17	0,025
10	G3/8	3549 10 17	22,5	33	29,5	17	0,025

This model allows two outlets to be on the same side and to run parallel to each other.

single, double and triple bodied banjo bolts with full passage for modular construction

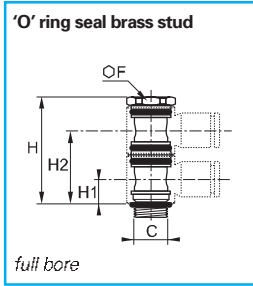
3527 single banjo bolts, BSPP and M5 thread



C		F	H	H1	Δ kg
M5x0,8	3527 00 19*		17	7,5	0,003
G1/8	3527 00 10	13	17	7,5	0,014
G1/4	3527 00 13	17	21	9,5	0,024
G3/8	3527 00 17	20	24,5	11	0,038
G1/2	3527 00 21	25	27,5	11,5	0,050

*with screwdriver slot

3528 stacking banjo for 2 body high modules BSPP and M5 thread

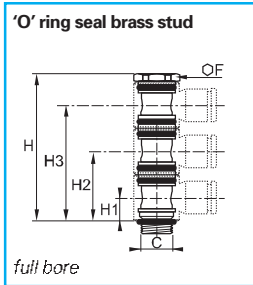


C		F	H	H1	H2	Δ kg
M5x0,8	3528 00 19*		24,5	7,5	18,5	0,004
G1/8	3528 00 10	13	31	7,5	22	0,020
G1/4	3528 00 13	17	39	9,5	27,5	0,029
G3/8	3528 00 17	20	46	11	32,5	0,048

*with screwdriver slot

Designed for use with 2 banjo bodies

3529 stacking banjo for 3 body high modules BSPP thread

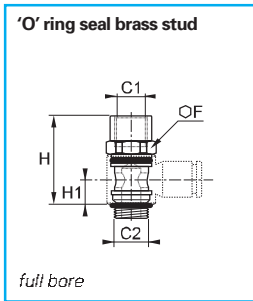


C		F	H	H1	H2	H3	Δ kg
G1/8	3529 00 10	13	45,5	7,5	22	36	0,026
G1/4	3529 00 13	17	54	9,5	27,5	45,5	0,036
G3/8	3529 00 17	20	67,5	11	32,5	54	0,059

*with screwdriver slot

Designed for use with 3 banjo bodies

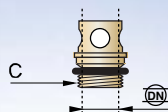
3524 female threaded banjo bolts, BSPP and M5 thread



C1	C2		F	H	H1	Δ kg
M5x0,8	M5x0,8	3524 00 19	8	17	7,5	0,004
G1/8	G1/8	3524 00 10	13	24,5	7,5	0,017
G1/4	G1/4	3524 00 13	17	33	9,5	0,026
G3/8	G3/8	3524 00 17	20	37,5	11	0,045
G1/2	G1/2	3524 00 21	25	42	11,5	0,057

The range of banjo bolts 3527 – 3528 - 3529 and 3524 is only useable in association with the corresponding bodies for modular construction 3538 - 3539 and 3549

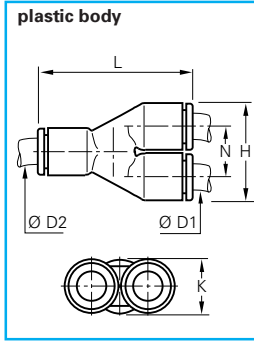
Thread bore for part numbers, 3527, 3528, 3529, and 3524



C	M5x0,8	G1/8	G1/4	G3/8	G1/2
\varnothing	2,5	5,5	8,5	11	13

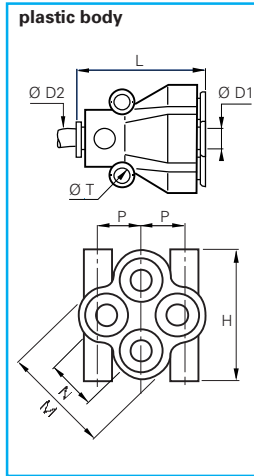
tube to tube fittings

3140 single "Y" piece - equal and unequal



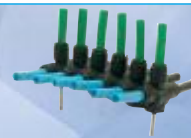
ØD1	ØD2		H	K	L	N	Δ kg
4	4	3140 04 00	17,5	8,5	28,5	9	0,004
6	6	3140 06 00	21,5	10,5	35	11	0,007
8	8	3140 08 00	28	13,5	45	14,5	0,013
10	10	3140 10 00	33	16	53	17	0,020
12	12	3140 12 00	39	19	57	17	0,025
4	6	3140 04 06	17,5	10,5	33	9	0,005
6	8	3140 06 08	22,5	13,5	41	11,5	0,019
8	10	3140 08 10	28	16	47	14,5	0,015
10	12	3140 10 12	33	19	57	17	0,022

3144 multiple "Y" piece - equal and unequal



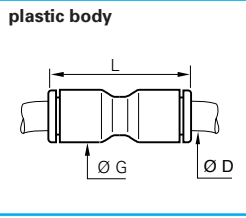
ØD1	ØD2		H	L	M	N	P	T	Δ kg
4	4	3144 04 04	25,5	30,5	21	10	8,5	3,7	0,027
6	6	3144 06 06	31,5	37,5	26,5	12	10	3,7	0,043
4	6	3144 04 06	25,5	30,5	21	10	8,5	3,7	0,027
6	8	3144 06 08	31,5	38	26,5	12	10	3,7	0,045

LF 3000® tube to tube fittings can be fitted in multiple strips by the use of Legris tube clips – please refer to page A30.



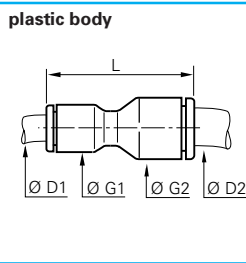
tube to tube fittings

3106 tube/tube connector



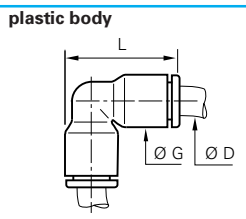
ØD		G	L	Δ kg
3	3106 03 00	8,5	25	0,002
4	3106 04 00	8,5	25	0,002
6	3106 06 00	10,5	28,5	0,004
8	3106 08 00	13,5	38	0,007
10	3106 10 00	16	42	0,009
12	3106 12 00	19	50,5	0,015
14	3106 14 00	22	56	0,043

3106 unequal tube/tube connector



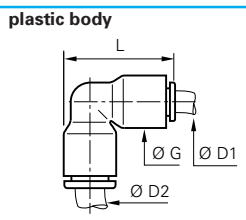
ØD1	ØD2		G1	G2	L	Δ kg
3	4	3106 03 04	8,5	8,5	25	0,002
4	6	3106 04 06	8,5	11	28	0,008
4	8	3106 04 08	13,5	13,5	38	0,010
6	8	3106 06 08	13,5	13,5	38	0,012
6	10	3106 06 10	16	16	42	0,018
8	10	3106 08 10	16	16	42	0,020
8	12	3106 08 12	19	19	50,5	0,031
10	12	3106 10 12	19	19	50,5	0,022
12	14	3106 12 14	22	22	56	0,024

3102 equal elbow



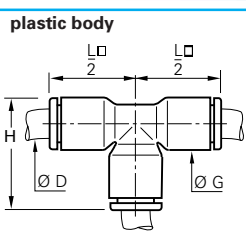
ØD		G	L	Δ kg
4	3102 04 00	8,5	19	0,002
6	3102 06 00	10,5	22,5	0,004
8	3102 08 00	13,5	29,5	0,007
10	3102 10 00	16	34,5	0,015
12	3102 12 00	19	40,5	0,017
14	3102 14 00	22	46,5	0,045

3102 unequal elbow



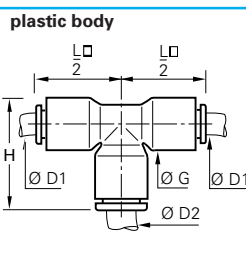
ØD1	ØD2		G	L	Δ kg
4	6	3102 04 06	10,5	22,5	0,004
6	8	3102 06 08	13,5	29,5	0,007
8	10	3102 08 10	16	34,5	0,015
10	12	3102 10 12	19	40,5	0,017

3104 equal tee



ØD		G	H	$\frac{L}{2}$	Δ kg
3	3104 03 00	8,5	19	14,5	0,004
4	3104 04 00	8,5	19	14,5	0,004
6	3104 06 00	10,5	22,5	17,5	0,006
8	3104 08 00	13,5	29,5	23	0,009
10	3104 10 00	16	34,5	26,5	0,014
12	3104 12 00	19	40,5	31	0,019
14	3104 14 00	22	46	35,5	0,067

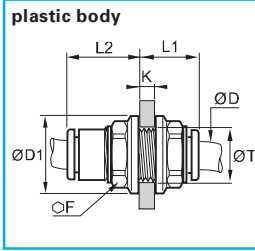
3104 unequal tee



ØD1	ØD2		G	H	$\frac{L}{2}$	Δ kg
4	6	3104 04 06	10,5	22,5	17,5	0,006
6	4	3104 06 04	10,5	22,5	17,5	0,006
6	8	3104 06 08	13,5	29,5	23	0,009
8	6	3104 08 06	13,5	29,5	23	0,009
8	10	3104 08 10	16	34,5	26,5	0,014
10	8	3104 10 08	16	34,5	26,5	0,019
10	12	3104 10 12	19	40,5	31	0,019
12	10	3104 12 10	19	40,5	31	0,019
14	8	3104 14 08	22	46	35,5	0,034

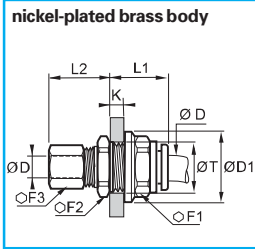
bulkhead connector fittings

3116 bulkhead connector



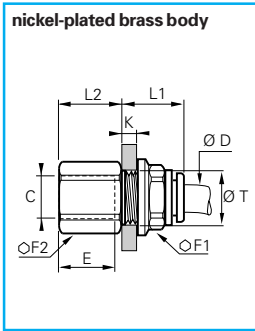
ØD	ØD1		F	K _{maxi}	L1	L2	T _{mini}	Δkg
4	16	3116 04 00	13	5,5	15	10	10,5	0,018
6	18	3116 06 00	15	8,5	18	10,5	12,5	0,029
8	21,5	3116 08 00	18	14,5	25	13,5	15,5	0,037
10	26	3116 10 00	22	14,5	27,5	15,5	18,5	0,084
12	31	3116 12 00	26	18,5	33	18	22,5	0,102
14	34,5	3116 14 00	29	20,5	37,5	20,5	25,5	0,135

3146 mixed bulkhead connector



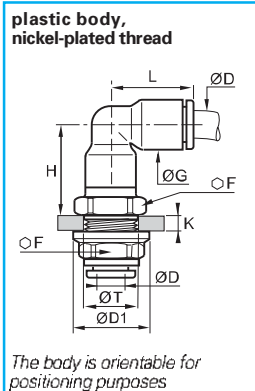
ØD	ØD1		F1	F2	F3	K _{maxi}	L1	L2	T _{mini}	Δkg
4	16	3146 04 00	13	13	10	7	17,5	17,5	10,5	0,021
6	18	3146 06 00	15	17	13	8	19	18	12,5	0,030
8	21,5	3146 08 00	18	19	14	8	20,5	20,5	15,5	0,038
10	26	3146 10 00	22	22	19	8,5	23	24,5	18,5	0,071
12	31	3146 12 00	26	25	22	8,5	27	25	22,5	0,086
14	34,5	3146 14 00	29	29	24	10,5	27	27	25,5	0,125

3136 female bulkhead connector, BSPP thread



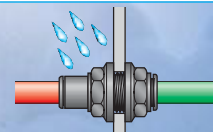
ØD	C		E	F1	F2	K _{maxi}	L1	L2	T _{mini}	Δkg
4	G1/8	3136 04 10	9,5	13	13	7	17	11,5	10,5	0,025
4	G1/4	3136 04 13	13,5	13	16	7	17	15,5	10,5	0,028
6	G1/8	3136 06 10	9,5	15	15	8	19	10,5	12,5	0,035
6	G1/4	3136 06 13	13,5	15	17	7	19	15,5	12,5	0,040
6	G3/8	3136 06 17	12	15	22	8	19	16	12,5	0,041
8	G1/8	3136 08 10	9,5	18	17	8	20,5	10,5	15,5	0,048
8	G1/4	3136 08 13	13,5	18	17	8	20,5	14,5	15,5	0,055
10	G3/8	3136 10 17	14	22	22	8,5	23	16	18,5	0,073
12	G3/8	3136 12 17	14	26	25	8,5	27	16	22,5	0,092
12	G1/2	3136 12 21	19,5	26	27	8,5	27	21,5	22,5	0,118

3139 equal bulkhead elbow



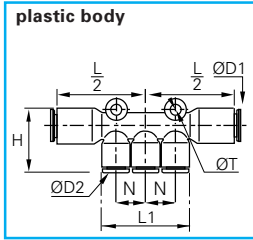
ØD	ØD1		F	G	H	K _{maxi}	L	T _{mini}	Δkg
4	16	3139 04 00	13	8,5	17	6,5	14,5	10,5	0,019
6	18	3139 06 00	15	10,5	19,5	7	17,5	12,5	0,024
8	21,5	3139 08 00	18	13,5	24	8	23	15,5	0,035
10	26	3139 10 00	22	16	28	8,5	26	18,5	0,081
12	31	3139 12 00	26	19	33	8,5	31	22,5	0,123
14	34,5	3139 14 00	29	25,5	37,5	10,5	36	25,5	0,143

All plastic nuts are fitted with an O-ring to optimise sealing to a panel.



multiple fittings and manifolds

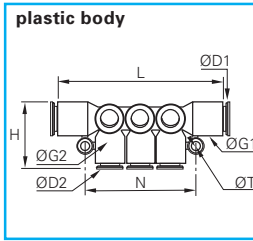
3304 multiple tee, with fixing holes



ØD1	ØD2		H	L1	$\frac{L}{2}$	N	T	Δ kg
6	4	3304 06 04	24,5	23	37	11,5	4,2	0,023
8	4	3304 08 04	24,5	23	37	11,5	4,2	0,031
8	6	3304 08 06	24,5	23	37	11,5	4,2	0,033
10	6	3304 10 06	36	29	40,5	14,5	4,2	0,058
10	8	3304 10 08	36	29	40,5	14,5	4,2	0,060

ØT = i.d. of fixing hole

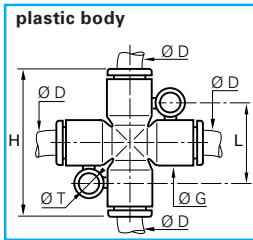
3306 unequal multiple elbow, with fixing holes



ØD1	ØD2		G1	G2	H	L	N	T	Δ kg
6	4	3306 06 04	13,5	11	25	72	43	4,2	0,018
8	4	3306 08 04	13,5	11	25	73	43	4,2	0,032
8	6	3306 08 06	13,5	11	25	73	43	4,2	0,022
10	6	3306 10 06	16	13,5	31	84	52	4,2	0,056
10	8	3306 10 08	16	13,5	31,5	84	52	4,2	0,036

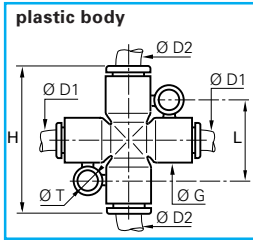
ØT = i.d. of fixing hole

3107 equal cross



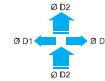
ØD		G	H	L	T	Δ kg
4	3107 04 00	11	36	20	4,2	0,010
6	3107 06 00	11	36	20	4,2	0,010
8	3107 08 00	13,5	46	22,5	4,2	0,020

3107 unequal cross

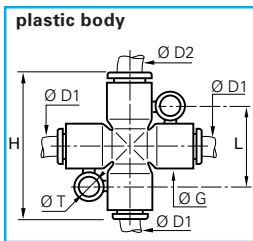


ØD1	ØD2		G	H	L	T	Δ kg
4	6	3107 04 06	11	36	20	4,2	0,010
6	8	3107 06 08	13,5	46	22,5	4,2	0,020

This model provides 2 outlets ØD1 of equal diameters and 2 outlets ØD2 of a different diameter. ØT = i.d. of fixing hole

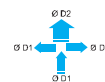


3107 unequal cross

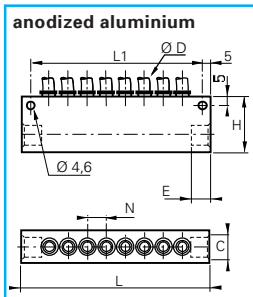


ØD1	ØD2		G	H	L	T	Δ kg
4	6	3107 06 04	11	36	20	4,2	0,010
6	8	3107 08 06	13,5	46	22,5	4,2	0,020

This model provides 3 outlets ØD1 of equal diameters and 1 outlet ØD2 of a different diameter. ØT = i.d. of fixing hole



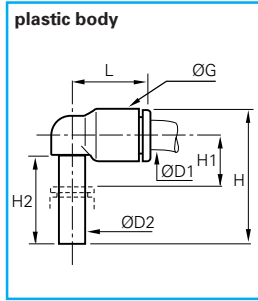
3310 manifold with LF 3000 push-in connection



ØD	C		Number of outlets	E	H	L	L1	N	Δ kg
4	G1/4	3310 04 13	8	10	33	114	104	11,5	0,163
6	G1/4	3310 06 13	8	10	33	114	104	12,5	0,163
8	G3/8	3310 08 17	6	12	33	114	104	15	0,163
10	G1/2	3310 10 21	6	16	48	145,5	135,5	17,1	0,207
12	G1/2	3310 12 21	6	16	45	158	148	20,5	0,225

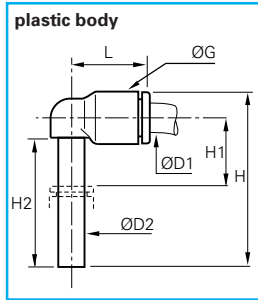
plug-in fittings

3182 plug-in equal and unequal compact elbow with plastic tailpiece



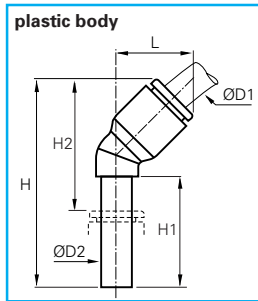
ØD1	ØD2		G	H	H1	H2	L	Δkg
4	4	3182 04 00	8,5	23	6	15,5	14	0,003
6	6	3182 06 00	10,5	26,5	7	17	16	0,003
8	8	3182 08 00	13,5	33,5	8	21,5	23	0,004
10	10	3182 10 00	16	39	9,5	24,5	23,5	0,009
12	12	3182 12 00	19	44,5	10	27,5	31	0,012
4	6	3182 04 06	10,5	26,5	7	17	16	0,003
6	4	3182 06 04	10,5	24,5	7	15,5	16	0,003
6	8	3182 06 08	13,5	33,5	8	21,5	22	0,004
8	10	3182 08 10	16	39	9,5	24,5	26,5	0,009
10	12	3182 10 12	19	44,5	10	27,5	31	0,012

3184 extended equal and unequal elbow with plastic tailpiece



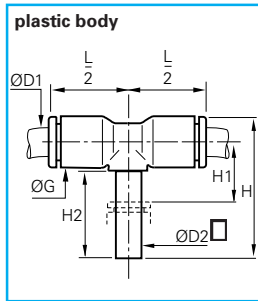
ØD1	ØD2		G	H	H1	H2	L	Δkg
4	4	3184 04 00	8,5	32,5	15,5	25	14	0,005
6	6	3184 06 00	10,5	38,5	19	29	16	0,005
8	8	3184 08 00	13,5	49	23,5	37	23	0,006
10	10	3184 10 00	16	56	26,5	41,5	26,5	0,011
12	12	3184 12 00	19	62,5	28	45,5	31	0,014
4	6	3184 04 06	10,5	38,5	19	29	16	0,005
6	8	3184 06 08	13,5	49	23,5	37	23	0,006
8	10	3184 08 10	16	56	26,5	41,5	26,5	0,011
10	12	3184 10 12	19	62,5	28	45,5	31	0,014

3180 45° equal elbow with plastic tailpiece



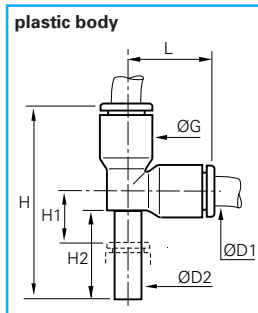
ØD1	ØD2		G	H	H1	H2	L	Δkg
4	4	3180 04 00	9	33,5	19	21	13	0,005
6	6	3180 06 00	11	39	21	25	14,5	0,005
8	8	3180 08 00	13,5	44	21,5	25,5	19,5	0,006
10	10	3180 10 00	16	53	27	32,5	23	0,009
12	12	3180 12 00	19	58,5	27,5	34	26,5	0,012

3188 plug-in equal and unequal compact tee with plastic tailpiece



ØD1	ØD2		G	H	H1	H2	L/2	Δkg
4	4	3188 04 00	8,5	23	6	15,5	14,5	0,005
6	6	3188 06 00	10,5	26,5	7	17	16	0,006
8	8	3188 08 00	13,5	33,5	8	21,5	23	0,008
10	10	3188 10 00	16	39	9,5	24,5	26,5	0,012
12	12	3188 12 00	19	44,5	10	27,5	31	0,017
4	6	3188 04 06	10,5	26,5	7	17	16	0,006
6	8	3188 06 08	13,5	33,5	8	21,5	23	0,007
8	10	3188 08 10	16	39	9,5	24,5	26,5	0,011
10	12	3188 10 12	19	44,5	10	27,5	31	0,016

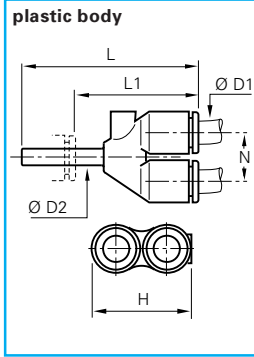
3183 plug-in equal and unequal run tee with plastic tailpiece



ØD1	ØD2		G	H	H1	H2	L	Δkg
4	4	3183 04 00	8,5	33	6	15,5	14,5	0,005
6	6	3183 06 00	10,5	38,5	7	17	17,5	0,006
8	8	3183 08 00	13,5	49	8	21,5	23	0,008
10	10	3183 10 00	16	57	10,5	24,5	26,5	0,012
12	12	3183 12 00	19	65,5	10,5	27,5	31	0,017
4	6	3183 04 06	10,5	38,5	7	17	17,5	0,006
6	8	3183 06 08	13,5	48,5	8	21,5	23	0,007
8	10	3183 08 10	16	56,5	10,5	24,5	26,5	0,011
10	12	3183 10 12	19	65,5	10,5	27,5	31	0,016

plug-in fittings

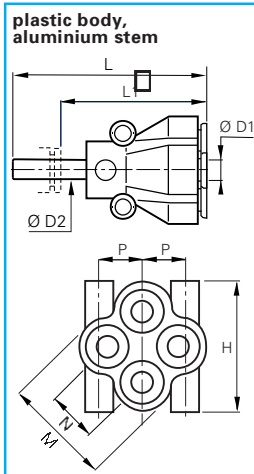
3142 plug-in equal and unequal single "Y" piece



ØD1	ØD2		H	L	L1	N	Δkg
4	4	3142 04 00	17,5	34	21,5	9	0,005
6	6	3142 06 00	21,5	39,5	25,5	11	0,008
8	8	3142 08 00	28	50,5	32	14,5	0,014
10	10	3142 10 00	33	57,5	36	17	0,021
12	12	3142 12 00	39	66	41	20	0,026
4	6	3142 04 06	17,5	35,5	21,5	9	0,005
6	8	3142 06 08	21,5	44	25,5	11	0,008
8	10	3142 08 10	28	53,5	32	14,5	0,014
10	12	3142 10 12	33	60	35	17	0,021

This model comprises one inlet (ØD2) and two equal outlets (ØD1)

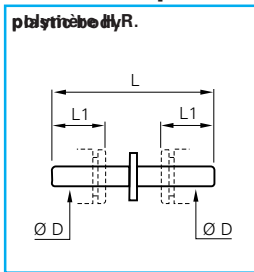
3143 plug-in multiple "Y" piece



ØD1	ØD2		H	L	L1	M	N	P	Δkg
4	6	3143 04 06	26	49,5	35,5	21,5	11	8,5	0,027
4	8	3143 04 08	26	51	32	21,5	11	8,5	0,026
6	8	3143 06 08	31,5	57,5	39	26,5	12	10	0,040

This model comprises one inlet (ØD2) and four equal outlets (ØD1)

3120 double male stem connector - plastic



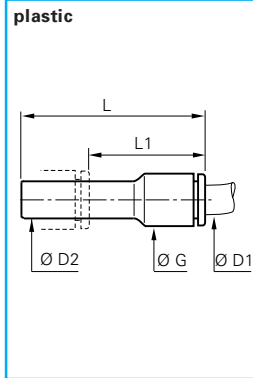
Ø D		L	L1	Δkg
4	3120 04 00	34,5	12	0,001
6	3120 06 00	38,5	14	0,001
8	3120 08 00	41	18,5	0,002
10	3120 10 00	51,5	20,5	0,003
12	3120 12 00	60	24,5	0,004
14	3120 14 00	69,5	25,5	0,005

Legris plug-in fittings also offer solutions for small spaces and system design by the use of cartridges. For details of Legris **Carstick**®, - an innovative, modern cartridge assembly - please refer to page A33.



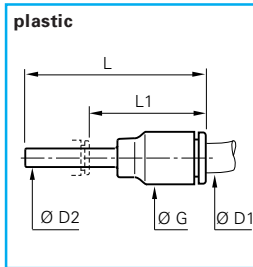
plug-in fittings and accessories

3166 reducer



ØD1	ØD2		G	L	L1	Δkg
3	4	3166 03 04	8,5	37,5	23,5	0,004
4	6	3166 04 06	8,5	37,5	23,5	0,004
4	8	3166 04 08	8,5	37,5	19	0,004
4	10	3166 04 10	12	44	22,5	0,005
6	8	3166 06 08	10,5	37,5	20	0,004
6	10	3166 06 10	10,5	38	17,5	0,006
6	12	3166 06 12	14,5	46	23	0,007
6	14	3166 06 14	14,5	48	23	0,008
8	10	3166 08 10	13,5	49	28,5	0,009
8	12	3166 08 12	13,5	49	24,5	0,010
8	14	3166 08 14	17	48	23	0,010
10	12	3166 10 12	21,5	56,5	33,5	0,019
10	14	3166 10 14	21,5	58,5	33,5	0,020
12	14	3166 12 14	23,5	58,5	33,5	0,023

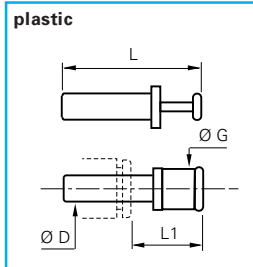
3168 increaser



ØD1	ØD2		G	L	L1	Δkg
6	4	3168 06 04	10,5	35	23	0,003
8	6	3168 08 06	13,5	45	31,5	0,005
10	8	3168 10 08	16	42,5	21	0,009
12	10	3168 12 10	19	49	24,5	0,019

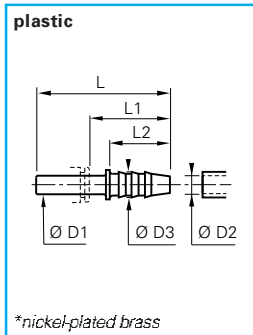
This model enables passage from a smaller to a larger tube diameter

3126 blanking plugs



Ø D		G	L	L1	Δkg
3	3126 03 00	6	25	13,5	0,001
4	3126 04 00	4	30	15,5	0,001
6	3126 06 00	8	33	16,5	0,001
8	3126 08 00	10	33	17,5	0,002
10	3126 10 00	12	42	21	0,003
12	3126 12 00	14	45	22	0,004
14	3126 14 00	16	49	23,5	0,005

3122 barbed connector for unequal tube



ØD1	ØD2		ØD3	L	L1	L2	Δkg
4	5	3122 04 05	7	37	25	17	0,003
4	3,2	3122 04 53	5	37	25	17	0,002
6	5	3122 06 05	7	39	25	17	0,004
8	6,3	3122 08 56	8,5	39,5	21	17	0,005
8	8	3122 08 08	10	44,5	26	22	0,005
10	6,3	3122 10 56	8	45	24,5	17	0,005
10	8	3122 10 08	10	50	29,5	22	0,006
12	8	3122 12 08	10	50	26	22	0,008
12	10	3122 12 10	12	48,5	25,5	22,5	0,014
12	12,5	3122 12 62	14,5	57	34	22,5	0,019
14	12,5	3122 14 62	14,5	59,5	34,5	22,5	0,022
14	14	*3122 14 14	16	59,5	34,5	22,5	0,022

modular plug-in connector



The modular construction of this component allows a number of pneumatic tubes to be connected or separated with a simple plug-in action.

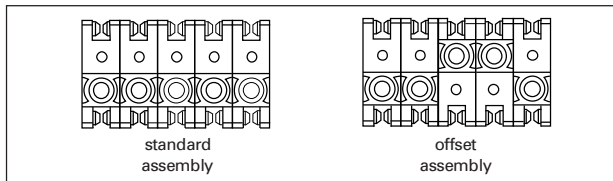
A series of male/female connectors provide a leakproof joint. Units of any length can be constructed and all connections are for 4 mm o.d. tube.

The two common uses for this product are :

1 - Fixing one half to a panel, machine or bulkhead and allowing the floating half to be assembled or disconnected to change a machine or sequence. Often when machines are transported air lines are separated and this connection provides a foolproof method of reconnection on site.

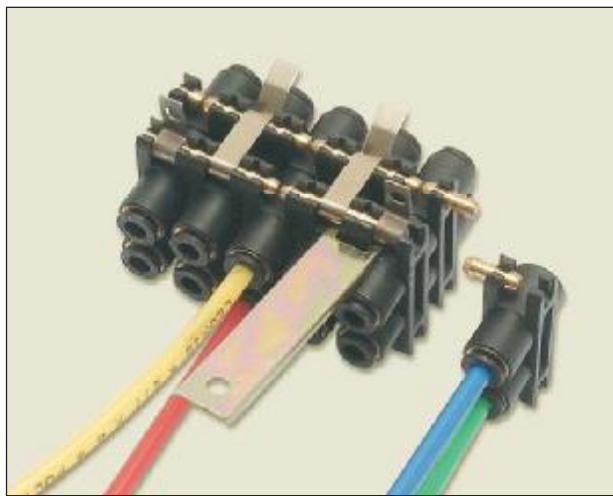
2 - Using the connector in an in-line mode for joining long lengths of tubing which need to be disconnected periodically.

It is advisable to limit the unit length to five connectors as illustrated in the photograph below left.



personalization of connector

By reversing the slices of the module during their assembly it is possible to "offset" units so that they cannot be mixed or inadvertently connected in the wrong order.



components used in the module assembly

The module is constructed from a number of symmetrical components each of which must mate with another similar component in the other half of the coupling.

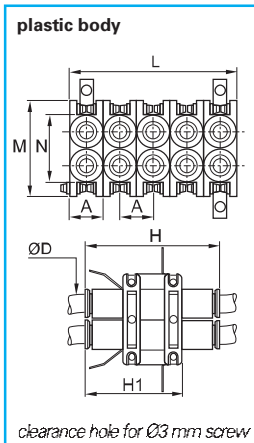
When fully assembled one box of the modular plug-in connector provides 20 x 4 mm tube connections.

10 in one half and 10 mating ones in the other.

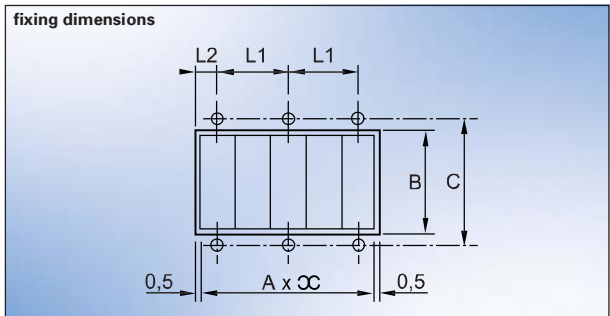
The complete box contains :

- 10 units each containing two 4 mm connections
- 20 joining pins and 4 end pins
- 4 mounting brackets
- 4 coupling clips
- 1 dismantling tool

3300 modular plug-in connectors for 4 mm o.d. tube



ØD		A	B	C	H	H1	L	L1	L2	M	N	Δkg
4	3300 04 00	11	21	40	40,5	29,5	55	22	6	32	20	0,106
6	3300 06 00	14	28	47	48	38,5	70	28	7,5	39	27,5	0,106
8	3300 08 00	14	28	47	50	39	70	28	7,5	39	27,5	0,106



LF 3000® multi-connector



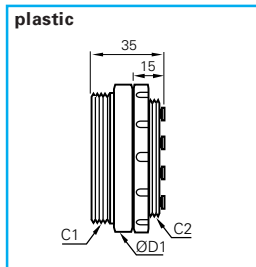
The Legris multi-connector is designed for simultaneous connection and disconnection of 2, 4, 7 and 12 tubes.
Its LF 3000® technology and performance makes it easy to use :

- instant connection and disconnection, without tools,
- full flow, without restriction.

In order to facilitate the installation, each tube outlet is numbered. A location pin avoids assembly errors and a cap helps to guide the tubes and to protect connections.
To cover all users' needs, this range can also be used for bulkhead connections.

Please consult us for customised versions, including connectors with integral shut-off valves.

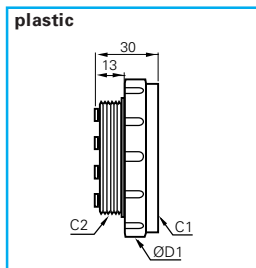
3320 male screw body



o.d. tube	number of outlets		C1	C2	ØD1
4	2	3320 04 00 02	M38x1,5	M32x1,5	42
4	4	3320 04 00 04	M46x1,5	M40x1,5	50
4	7	3320 04 00 07	M46x1,5	M40x1,5	50
4	12	3320 04 00 12	M65x1,5	M58x1,5	70
6	2	3320 06 00 02	M38x1,5	M32x1,5	42
6	4	3320 06 00 04	M46x1,5	M40x1,5	50
6	7	3320 06 00 07	M46x1,5	M40x1,5	50
8	2	3320 08 00 02	M38x1,5	M32x1,5	45

The number of male body outlets must correspond to the same number of outlets on the female body.
E.g. model 3320 08 00 02 must only be connected to model 3321 08 00 02.

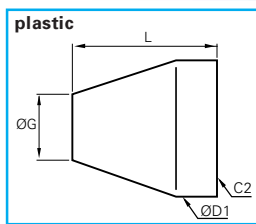
3321 female screw body



o.d. tube	number of outlets		C1	C2	ØD1
4	2	3321 04 00 02	M38x1,5	M32x1,5	45
4	4	3321 04 00 04	M46x1,5	M40x1,5	55
4	7	3321 04 00 07	M46x1,5	M40x1,5	55
4	12	3321 04 00 12	M65x1,5	M58x1,5	75
6	2	3321 06 00 02	M38x1,5	M32x1,5	45
6	4	3321 06 00 04	M46x1,5	M40x1,5	55
6	7	3321 06 00 07	M46x1,5	M40x1,5	55
8	2	3321 08 00 02	M38x1,5	M32x1,5	45

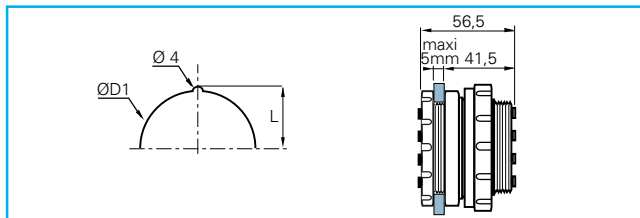
The number of female body outlets must correspond to the same number of outlets on the male body.
E.g. Model 3321 08 00 02 must only be connected to model 3320 08 00 02.

3329 screw cap



number of outlets		C2	ØD1	G	L
2	3329 00 01	M32x1,5	42	32	50
4-7	3329 00 02	M40x1,5	50	35	55
12	3329 00 03	M58x1,5	70	34	70

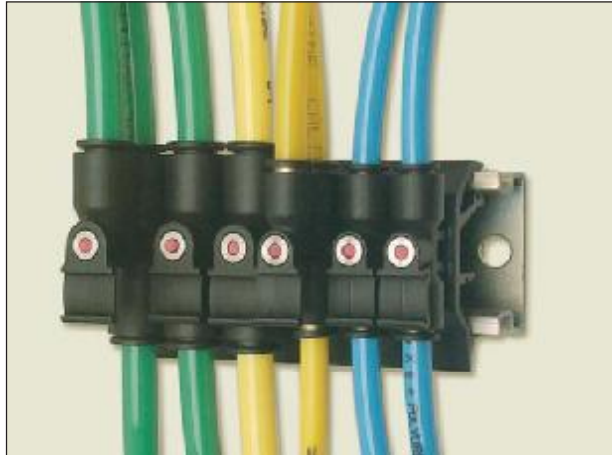
overall dimensions for bulkhead mounting



number of outlets	L	ØD1
2	17	32,5
4-7	21	40,5
12	30,3	58,5

To complement the LF 3000® multi-connector, you will also find a range of Multitube on page M13 of the Tubes and Hoses section.

connectors for DIN rail profile Γ or Ω



These components are similar in principle to the electrical connectors found in control panels and are used to rationalise cabling and to assist trouble shooting.

Used alongside electrical connectors, Legris DIN rail connectors provide similar facilities for pneumatic circuits, and are mounted on the same rail profile which allows electricians and pneumatics to run side by side. All tube connections are Legris push-in fittings for plastic tubing.

identification and trouble shooting

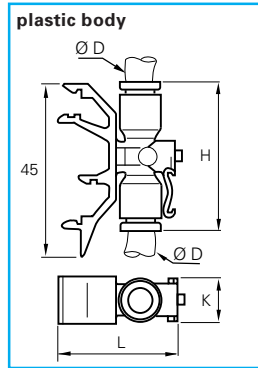
Tube identification

Channels or slots for labels are designed to assist tube identification.

Test point facility

Being able to detect the presence of air is an important consideration when maintaining pneumatic control systems. Legris DIN rail connectors incorporate test points which pop out after being manually depressed, indicating the presence of air in the system.

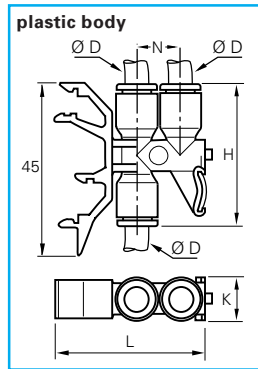
3379 connector for 2 tubes in line



ØD		H	K	L	Δ kg
4	3379 04 00	36,5	12	30	0,020
6	3379 06 00	36,5	12	30	0,026
8	3379 08 00	46	13	32,5	0,034

Fixed by clipping

3381 connector for 3 tubes

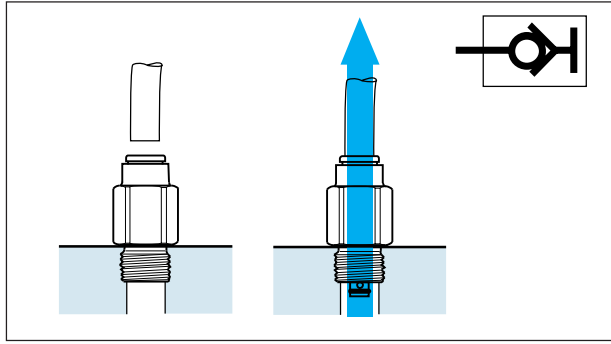


ØD		H	K	L	N	Δ kg
4	3381 04 00	36,5	11	39,5	11,5	0,027
6	3381 06 00	36,5	11	39,5	11,5	0,033
8	3381 08 00	46	13	44,5	14,5	0,043

Fixed by clipping

Working pressure of models 3379 and 3381 : 1 to 10 bar

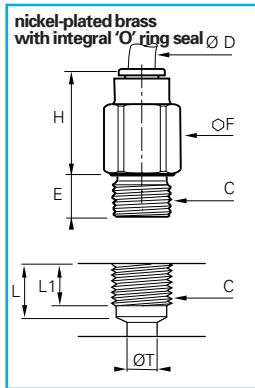
self-sealing fittings



Legris self-sealing fittings enable circuits and machinery to stay under pressure when being checked and maintained. The working process is simple :

- Prevents fluid flow when there is no tube connected.
- Conversely, when connected, the compressed air flow is restored in both directions.

3391 self-sealing male stud fitting, BSPP thread



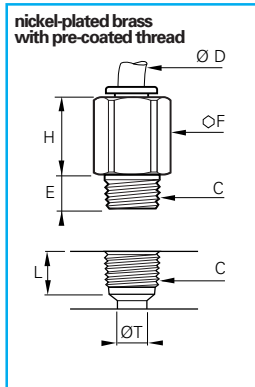
Ø D	C	E	F	H	Δkg
4	G1/8 3391 04 10	5	13	18	0,018
6	G1/8 3391 06 10	5	14	19,5	0,018
8	G1/8 3391 08 10	5	14	29,5	0,025
8	G1/4 3391 08 13	5,5	16	25,5	0,037
10	G3/8 3391 10 17	5,5	20	27,5	0,052

stud dimensions

Ø D	C	L	L1	Ø T
4	G1/8	7,5	6	5
6	G1/8	9	6	7,5
8	G1/8	10	6	7,5
8	G1/4	11	8	9
10	G3/8	13	11	10

maximum working pressure = 10 bar

3091 self-sealing male stud fitting, BSPT thread



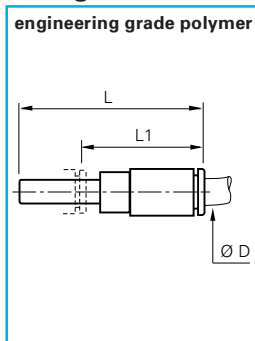
Ø D	C	E	F	H	Δkg
4	R1/8 3091 04 10	7,5	12	18	0,018
6	R1/8 3091 06 10	7,5	13	19,5	0,018
8	R1/8 3091 08 10	6,5	14	25	0,025
8	R1/4 3091 08 13	11	14	25,5	0,037
10	R3/8 3091 10 17	11,5	17	27,5	0,052

stud dimensions

Ø D	C	L	Ø T
4	R1/8	9,5	5
6	R1/8	9,5	7,5
8	R1/8	10,5	7,5
8	R1/4	13,5	9
10	R3/8	14	10

maximum working pressure = 10 bar

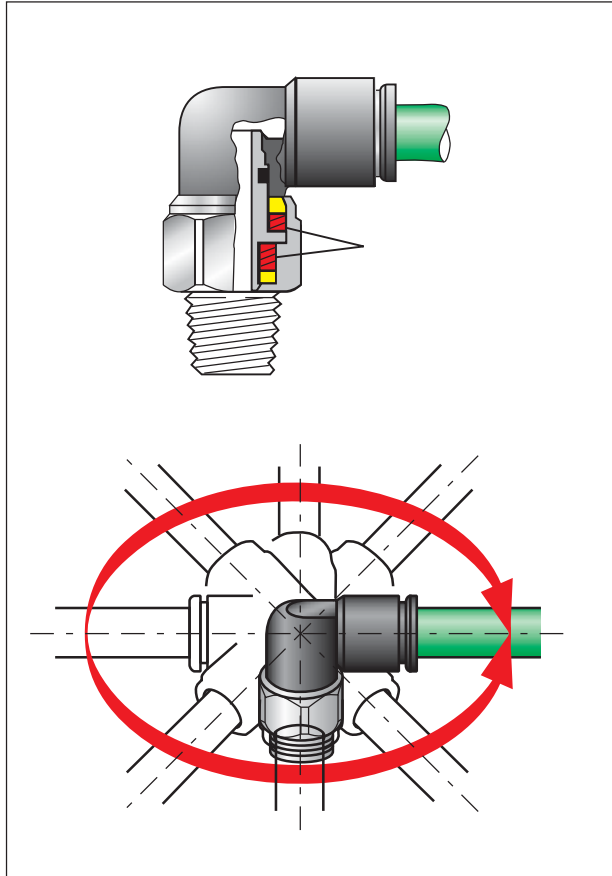
3160 self-sealing plug-in fitting



Ø D	L	L1	Δkg	
4	3160 04 00	46	33,5	0,005
6	3160 06 00	53,5	31	0,009
8	3160 08 00	58	31	0,009

This model prevents fluid flow in-line when there is no tube connected ; connecting the tube allows fluid flow.

swivel fittings



At the heart of the LF 3000® range, Legris swivel fittings are designed to satisfy the requirements of industrial automation and robotics. The swivel fitting features low-friction bearings enabling the fitting to rotate in conjunction with the stroke of the cylinder piston. This prevents premature tube wear due to excessive flexing.

Highly reliable technology gives particularly long life expectancy on all installations thus equipped.

To achieve longevity of the tubing we advise that the tube is designed to move in the same plane as the tube-exit from the fitting. We advise against the use of recoil tubing.

Technical specification

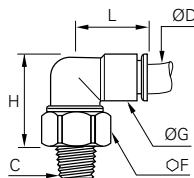
The values in this table are at 6 bar pressure and 20°C temperature.

o.d. tube mm	4	6	8	10	12
torque in Nm x 10	<2,5 • 10 ³	<4 • 10 ³	<7 • 10 ³	<11 • 10 ³	<16 • 10 ³
maximum rotation speed in radian/second	190	160	120	90	80

3159 oscillating compact elbow, BSP taper stud



body : engineering plastic stud : nickel-plated brass with sealant or threads

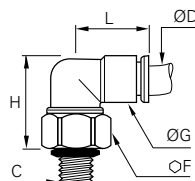


ØD	C		F	G	H	L	Δkg
4	R1/8	3159 04 10	12	11	22	17,5	0,014
6	R1/8	3159 06 10	14	14	26,5	20,5	0,020
6	R1/4	3159 06 13	14	14	23,5	20,5	0,022
8	R1/8	3159 08 10	17	16	32	23,5	0,034
8	R1/4	3159 08 13	17	16	29	23,5	0,034
8	R3/8	3159 08 17	17	16	25	23,5	0,032
10	R1/4	3159 10 13	19	19,5	37,5	29	0,054
10	R3/8	3159 10 17	19	19,5	33,5	29	0,050
12	R1/4	3159 12 13	21	22	44,5	33,5	0,076
12	R3/8	3159 12 17	21	22	41	33,5	0,070

3189 oscillating compact elbow, BSPP and M5 stud



plastic body, nickel-plated brass, with integral 'O' ring seal



ØD	C		F	G	H	L	Δkg
4	M5x0,8	3189 04 19	12	11	24,5	17,5	0,012
4	G1/8	3189 04 10	13	11	23	17,5	0,014
6	M5x0,8	3189 06 19	12	14	27,5	20,5	0,016
6	G1/8	3189 06 10	14	14	27	20,5	0,020
6	G1/4	3189 06 13	16	14	25,5	20,5	0,022
8	G1/8	3189 08 10	17	16	33,5	23,5	0,034
8	G1/4	3189 08 13	17	16	31	23,5	0,034
8	G3/8	3189 08 17	20	16	29,5	23,5	0,032
10	G1/4	3189 10 13	19	19,5	50	29	0,054
10	G3/8	3189 10 17	20	19,5	37	29	0,050
12	G1/4	3189 12 13	21	22	46,5	33,5	0,076
12	G3/8	3189 12 17	21	22	45,5	33,5	0,070

length of parallel thread (E) for 3189

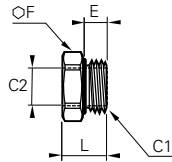
C	M5X0,8	G1/8	G1/4	G3/8
E	3	5	5,5	5,5

accessories

0178 reducer male to female, BSPP and M5



nickel-plated brass,
with integral 'O' ring seal

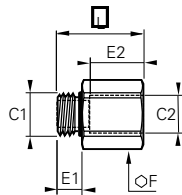


C1	C2		E	F	L	Δ kg
M7x1	M5x0,8	0178 55 19	5	10	12	0,004
G1/8	M5x0,8	0178 10 19	5	13	9	0,005
G1/4	G1/8	0178 13 10	5,5	16	9,5	0,006
G3/8	G1/8	0178 17 10	5,5	20	10,5	0,016
G3/8	G1/4	0178 17 13	5,5	20	10,5	0,014
G1/2	G1/4	0178 21 13	7,5	24	12,5	0,024
G1/2	G3/8	0178 21 17	7,5	24	12,5	0,016
G3/4	G1/2	0178 27 21	7,5	32	13,5	0,035

0179 increaser male to female, BSPP



nickel-plated brass,
with integral 'O' ring seal

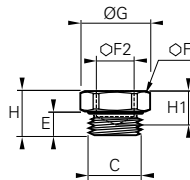


C1	C2		E1	E2	F	L	Δ kg
M12x1,5	G1/4	0179 67 13	6,5	8	16	18	0,005
G1/8	G1/4	0179 10 13	5	12	16	19	0,005
G1/4	G3/8	0179 13 17	5,5	15	20	23	0,006
G3/8	G1/2	0179 17 21	5,5	16	24	24	0,016

0222 threaded plug, BSPP and M5

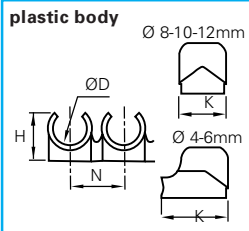


nickel-plated brass,
with integral 'O' ring seal



C		E	F	G	F2	H	H1	Δ kg
M5x0,8	0222 19 00	3,5	8	9	2,5	7,1	4,1	0,004
M7x1	0222 55 00	5	10	11	3	8,5	4,7	0,005
G1/8	0222 10 00	5	13	14	5	8,6	6,4	0,005
G1/4	0222 13 00	5,5	16	17,5	6	9,5	7,4	0,007
G3/8	0222 17 00	5,5	20	22	8	10,5	8,4	0,012
G1/2	0222 21 00	7,5	24	26	10	12,1	9,9	0,019

Clip clip strips for tubes



ØD		H	K	N	Number of clips per strip	Ø LF3000® to be clipped	Δ kg
4	Clip 04 00	9	13,5	10,5	8		0,008
6	Clip 06 00	10,5	13	10,5	8		0,009
8	Clip 08 00	12,5	10,5	12	7	4	0,009
10	Clip 10 00	14	12	15	6	6	0,010
12	Clip 12 00	16,5	14	16,5	5		0,011
14	Clip 14 00	18	16	20,5	4	8	0,011

Delivered in boxes of 5 strips of the same diameter (complete with self-tapping screws of 9.5 mm length).

Legris clips are also designed to fix LF 3000® fittings in series within a minimum of space. Supplied in strips, clips can be separated by hand or with a tube cutter and enable the use of multiple clips, depending on the users' needs.



accessories

3110 coloured release button covers for LF 3000® 3rd Generation



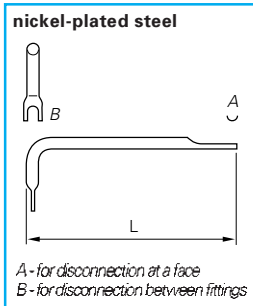
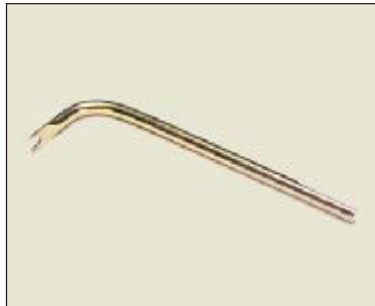
Ø D						
4	3110 04 00	3110 04 02	3110 04 03	3110 04 04	3110 04 05	0,001
6	3110 06 00	3110 06 02	3110 06 03	3110 06 04	3110 06 05	0,001
8	3110 08 00	3110 08 02	3110 08 03	3110 08 04	3110 08 05	0,001
10	3110 10 00	3110 10 02	3110 10 03	3110 10 04	3110 10 05	0,001
12	3110 12 00	3110 12 02	3110 12 03	3110 12 04	3110 12 05	0,001
14	3110 14 00	3110 14 02	3110 14 03	3110 14 04	3110 14 05	0,001



LF 3000® third generation fittings are supplied fitted with fixed black manual release buttons. Coloured release button covers help the **identification** of circuits. Simply cover the black release button with a button of another colour.

5 colours are available as above and allow colour coding to be used throughout circuits, in association with the tubing of the same colour. Legris release buttons are supplied in quantities of 100.

3000 70 disconnection tool



Ø D		L	
4	3000 70 04	180	0,024
6	3000 70 06	196	0,040
8	3000 70 08	208	0,053
10	3000 70 10	220	0,069
12	3000 70 12	236	0,092
14	3000 70 14	254	0,108

In cases where access is difficult this tool can be particularly useful.

The LF 3000® system is designed for use with various types of tubing found in this catalogue :

- semi-rigid nylon tube :
3 mm OD to 14mm OD
- page M7

- flexible polyurethane tube :
3 mm OD to 14mm OD
- page M9

- fluoropolymer tube :
4 mm OD to 12mm OD
- page M12

